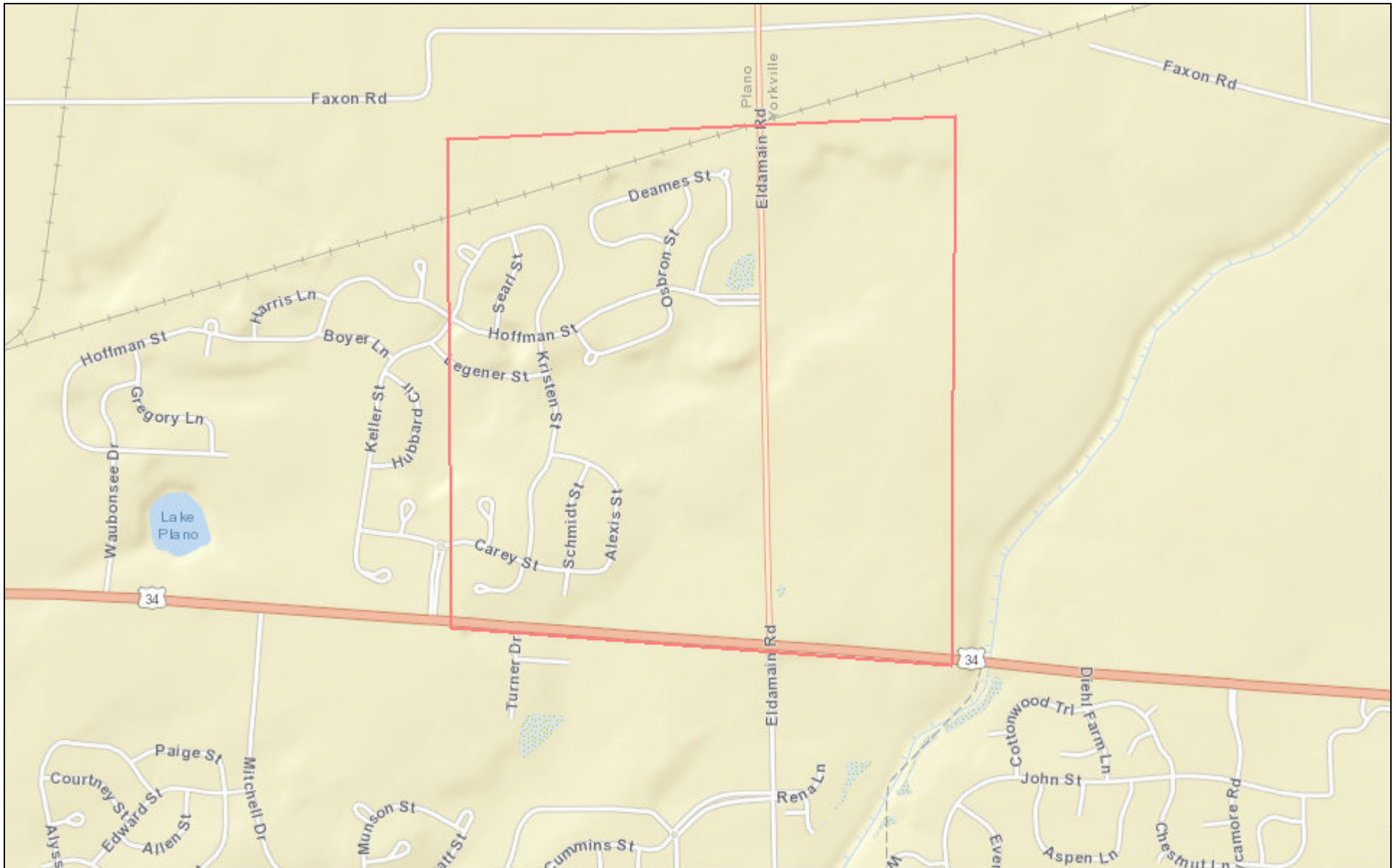


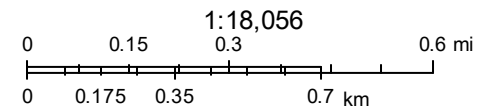
# IDoA Gypsy Moth Treatments - *Bacillus thuringiensis kurstaki* 48B Kendall\_1 - 394 acres



4/6/2018, 11:27:04 AM

### Treatments

- non-MD
- States



Sources: Esri, HERE, Garmin, USGS, Intermap, INCREMENT P, NRCan, Esri Japan, METI, Esri China (Hong Kong), Esri Korea, Esri (Thailand),